

A red ambulance is shown in a fire station setting. The side of the ambulance features the text 'PORTAGE COUNTY' in an arch, the number '620' above the driver's door, 'PARAMEDIC UNIT' on a black stripe, and '911' and 'AMBULANCE' on the lower side. A fire department Maltese cross emblem is visible on the driver's door. The ambulance is parked on a concrete surface, and another fire truck is partially visible in the background.

# **Your Portage County Ambulance**

**A Brief Look at  
History and Operations.**

# **Ambulance Service History**



# Contract History

- **1969 County provided three “ambulance attendants” 24/7.**
- **1981 County provided ten “ambulance attendants” 24/7.**

**1984 First reference to “on-line and on-call” ambulances.**

**– Two ambulances on-line 24/7.**

**– A third ambulance on-call 24/7.**

**1988 A fourth on-call ambulance was added.**

# ***Contract History Summary***

**10 paramedics since 1981 (training for paramedics completed 1/1/2002).**

**2 on-line ambulances 24/7 since 1984.**

**2 on-call ambulances 24/7 since 1988.**

# ***Staffing Requirements?***



- **Two paramedics required to staff each on-line ambulance 24/7.**
- **Four paramedics required to staff 2 on-line ambulances 24/7.**

- **Personnel needed to staff  
two on-line ambulances**

**24/7:**

**15**

# ***Why 15 Paramedics?***

**365 days X 24 hour per day  
= 8,760 hours per year.**

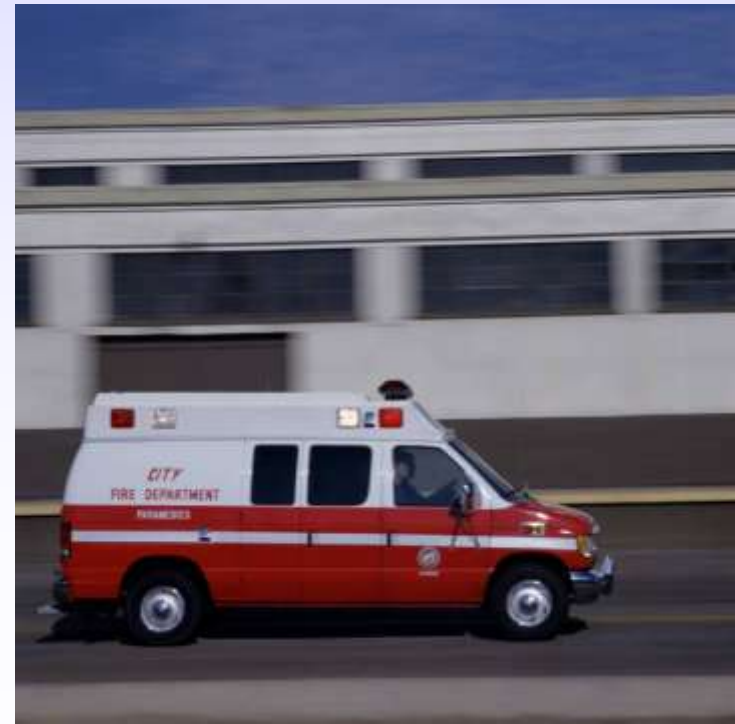
**Average hours a paramedic  
is on the job per year is  
2,324 hours.**

**This excludes vacation, sick  
leave, injury, military  
activation...**





**Hours in a year (8,760) divided by Avg.  
hrs/yr on the job per paramedic (2,324)  
= 3.75 = the number of paramedics  
required to staff one position 24/7.**



# Staffing

**3.75 paramedics required to fill one position 24/7**

**X**

**four positions =**



**15**



# Currently

**The current contract funds 10 paramedics to staff two ambulances 24/7.**

**Fifteen paramedics are required to staff two ambulances 24/7.**

The City is absorbing  
the cost of *five*  
paramedics which are  
dedicated to the  
County's EMS system.

The SPFD is understaffed by 5 Paramedics to fully staff Portage County's contractual requirements of 2 ambulances 24/7.

# Why Is This Understaffing an Issue Now?

Because too often more than two  
ambulances are on calls at the  
same time - simultaneous calls.

# Why Now?

---

**Simultaneous ambulance calls reduce the Fire Department's ability to provide fire protection and rescue services to Stevens Point residents, businesses, schools, visitors...**



# ***Why Now?***

- **Simultaneous ambulance calls**
  - **Reduce the Fire Department's ability to provide mutual aid to our neighboring towns and villages.**
  - **Increases reliance on neighbors to provide initial firefighting services to the City.**





... Why Now?

Frequently when 3<sup>rd</sup> ambulance has responded, Wisconsin's Administrative Code (COMM 30) prohibits SPFD from providing interior firefighting – Rescue.

# Simultaneous Calls (3 or more)

<u><i>Year</i></u>	<u><i>Three</i></u>	<u><i>Four</i></u>
<b>1991</b>	<b>11</b>	<b>0</b>
<b>1993</b>	<b>50</b>	<b>2</b>
<b>1995</b>	<b>67</b>	<b>4</b>
<b>1997</b>	<b>80</b>	<b>16</b>
<b>1999</b>	<b>125</b>	<b>23</b>
<b>2001</b>	<b>153</b>	<b>18</b>
<b>2003</b>	<b>165</b>	<b>21</b>

# **Why Do We Have Simultaneous Calls?**

- **Increase in total runs.**
  - **2,129 in 1999.**
  - **3,361 in 2004.**
- **Increase in time per call as more medical services are being provided at the scene by highly skilled paramedics.**

# Another Topic of Recent Discussion:



Ambulance Response Times.

# Response Zones - 2003

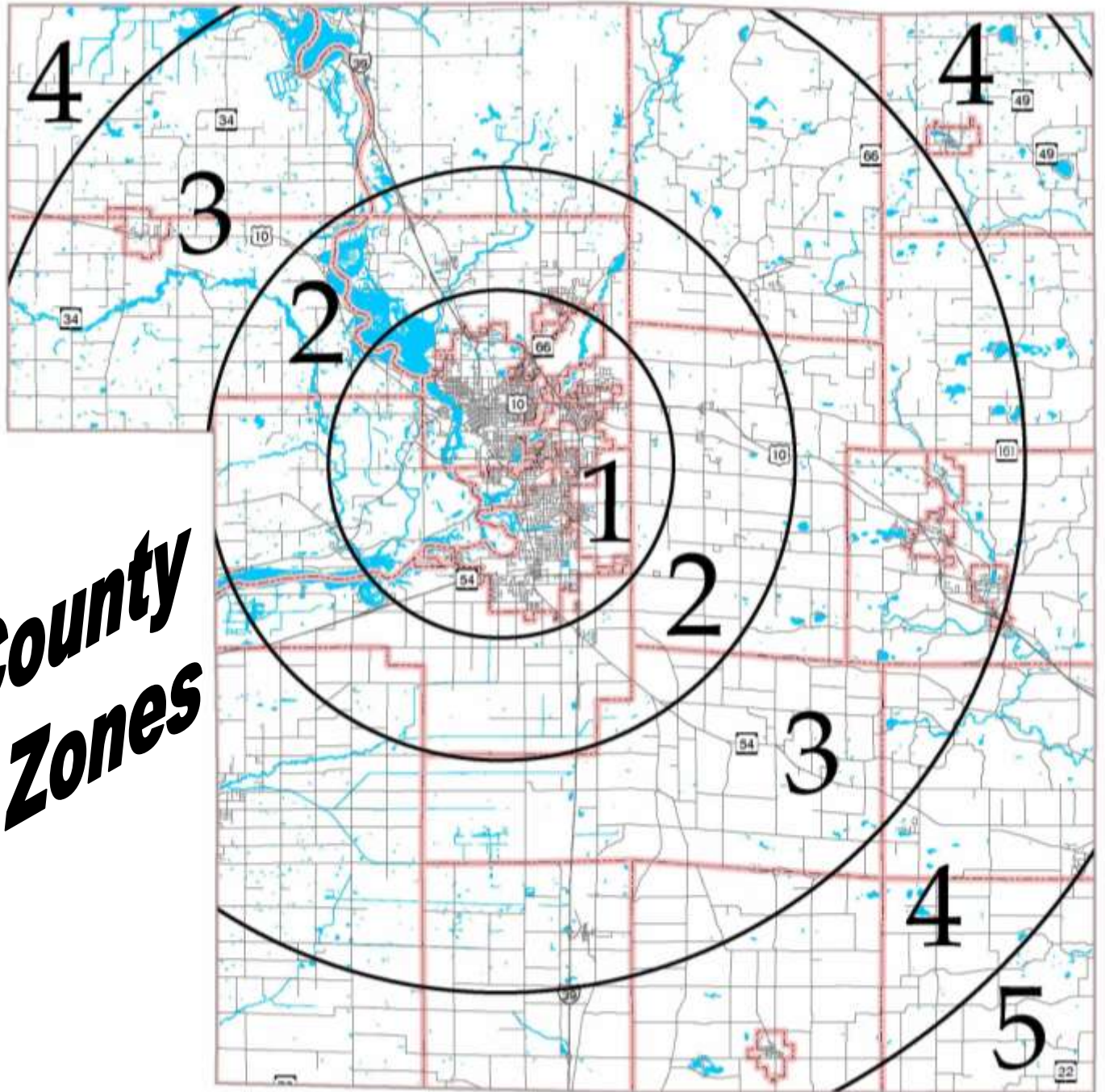
<u>Zone</u>	<u>Miles</u>	<u># of Calls (%)</u>	<u>Standard*</u>	<u>Actual**</u>
1	8	2,486 (79)	7:59 or Less	97.67 %
2	11	188 (6)	10:59 or Less	92.02 %
3	15	281 (9)	14:59 or Less	98.63 %
4	22	155 (5)	21:59 or Less	90.32 %
5	30	19 (1)	29:59 or Less	94.74 %
		3,129 (100)		

Note: Measured from center of Point & Plover (Patch & Michigan)

\* Established by Portage County EMS Advisory Committee.

\*\* Target of 90% established for zones 1 and 4 per national standard.

# ***Portage County Response Zones***



# **Major Improvements in EMS Service at No Additional Cost to the Contract.**

- **Districting of ambulance out of Station #2.**
  - ↓ response by 4.00 min to I-39 & Hwy HH.
  - ↓ response by 3.73 min to Plover (Post Rd & HH).
  - ↓ response by 2.92 min to Amherst.
- **Call screening by Paramedics for emergent response.**
- **Part time EMS system manager is now a Paramedic.**

# What is the Problem?

- The Fire Department can no longer subsidize the County EMS contract with five personnel from fire suppression and rescue duties. The department needs five additional paramedics.
- The increasing level of medical care and increasing frequency of EMS calls now require a dedicated manager.



# What is Portage County Getting?

- Response times that meet or exceed national standards.
- Unsurpassed medical care provided by experienced staff.
- Seamless countywide paramedic system.
- Access to staffing for up to 5 ambulances for immediate responses.

*You won't get any better  
service  
from any other provider.*