

What to expect when the COVID-19 public health emergency ends

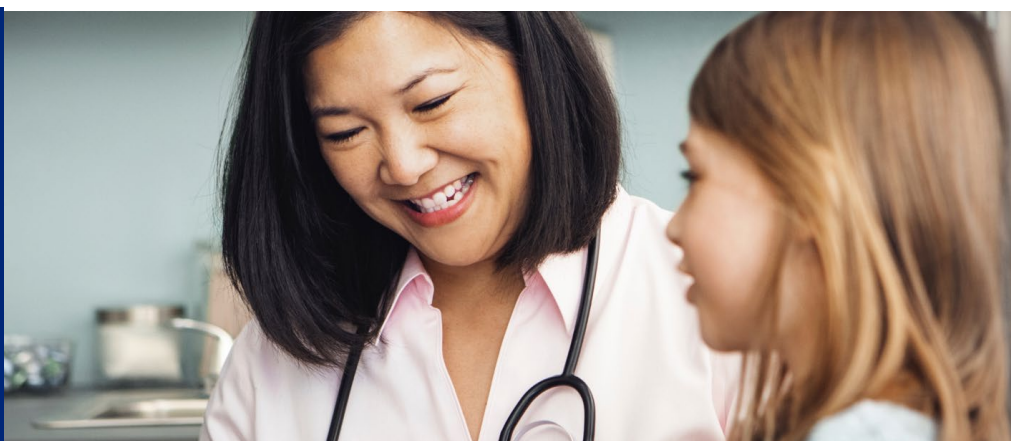
The COVID-19 pandemic has been a challenging time for all. We are grateful for your patience and understanding as everyone navigated this unprecedented situation.

With the number of COVID-19 cases declining, and vaccination rates increasing, the public health emergency is set to end May 11, 2023.

Although the public health emergency is ending, we encourage everyone to continue to follow the guidelines and recommendations of health experts to keep themselves and their communities safe. Through this transition, we are committed to providing our members with the information and resources they need now and in the future.

Questions?

Contact your member services team using the number on your ID Card.



Standard benefits during and after the COVID-19 public health emergency (PHE)

COVID-19 Benefits	Standard Coverage during PHE*	Standard Coverage after PHE*
COVID-19 Vaccines	No cost-share for in or out of network approved and authorized vaccines and boosters.	Cover ACIP recommended and CDC adopted COVID-19 vaccine and booster serum and administration as part of preventive benefits at zero-dollar cost share, when in network.
COVID-19 Over-the-Counter (OTC) Tests	Cover up to 8 OTC tests per month under medical and/or pharmacy.	No longer coverage for OTC tests.
COVID-19 Lab Tests	No cost-share for approved and authorized provider ordered diagnostic and antibody testing/ related visits at approved locations.	Cover approved and authorized provider ordered COVID-19 lab tests. Now subject to deductible and coinsurance.
COVID-19 Treatment	Pay according to member's plan benefits. May be subject to cost share.	No change.
Telehealth	No cost-share for COVID-19 testing related visits.	Cover telemedicine visits with cost share (copayments, coinsurance, deductibles).
Telemedicine (Teladoc or other customer vendor)	No cost-share for COVID-19 testing related visits.	Cover telemedicine visits with cost share (copayments, coinsurance, deductibles).

